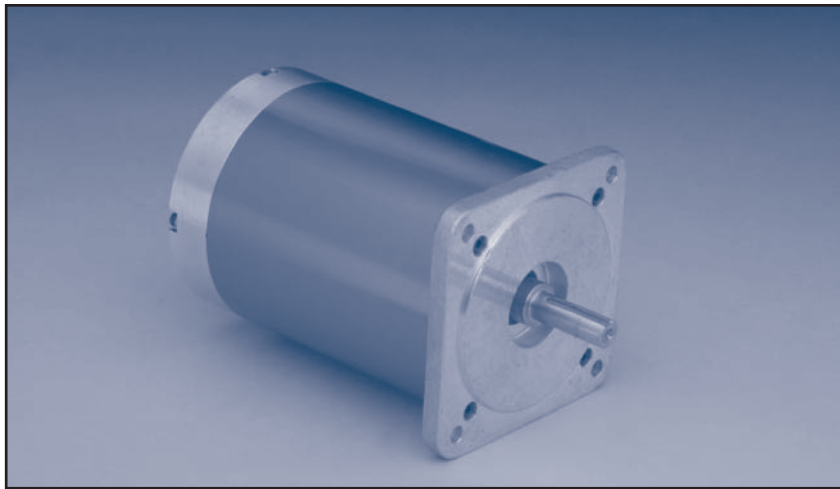




ITT

Cleveland Motion Controls



BRUSHLESS SERVO MOTORS BNR 3300 SERIES

Series 3300, 325 VDC brushless servo motor — provides fast response, accurate control and high torque-to-inertia ratios

Performance Benefits

Cleveland Motion Controls specializes in the design of high performance brushless servo motors that provide efficiency, flexibility of application, and a long and trouble-free service life. Our BNR 3300 series is no exception.

With fast response, accurate control and high torque-to-inertia ratios, you can count on the 3300 series of servo motors to provide smooth operation throughout a full speed range. The BNR 3300 Series delivers smooth and superior low speed performance, and maximum power ratings with low thermal resistance for high speed performance. In addition, with maximum torque in a smaller package, you can count on better pricing for a better overall value.

When integrated with high performance brushless amplifiers, BNR 3300 servo motors provide effective and highly efficient motion control solutions for a wide range of applications—including factory automation, packaging, robotics, machine tools, semi-conductor, medical instrumentation, and more.

Design Features

BNR 3300 Series servo motors are rated from 12 lb-in. to 34 lb-in. with speeds and torque stability up to 10,000 RPM — accommodating DC bus voltages up to 325 volts. They utilize the latest in high performance Neodymium permanent magnet technology, and are available in several standard windings to meet your most demanding applications.

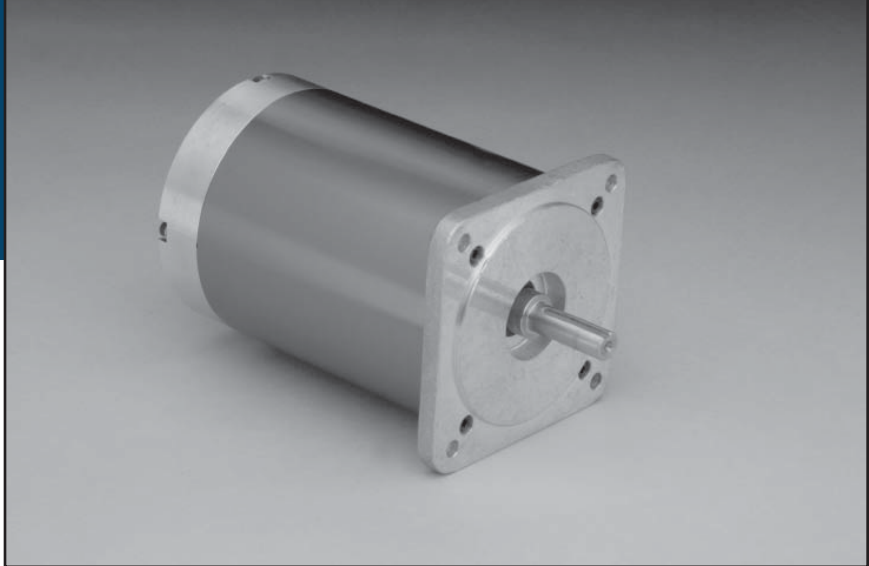
Each servo motor in the 3300 Series is ruggedly designed and manufactured for reliable performance. To satisfy many different applications, 3300 Series motors are manufactured to NEMA/IEC specifications. For severe duty environments, the BNR design is also available with IP65 sealing.

- Continuous torque ratings up to 34 lb-in. —with speeds up to 10,000 RPM
- IP65 Sealing available
- NEMA mounting features available
- IEC 72 Metric specifications available
- Maximum torque per frame size with high performance Neodymium magnets
- Superior low speed performance
- Numerous custom options available
- CE / UL



BRUSHLESS SERVO MOTORS BNR 3300 SERIES

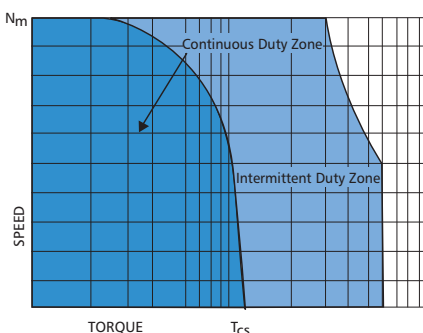
- Continuous torque range of 12 lb-in. to 34 lb-in.
- Neodymium magnet construction
- More torque per smaller frame size
- IP65 Sealing available
- Speeds to 10,000 RPM
- High torque-to-inertia ratios
- CE / UL



MOTOR SPECIFICATIONS

SYMBOL	MOTOR PARAMETER	UNITS	BNR3312A	BNR3324D	BNR3334E
N_m	Max Operating Speed	RPM	10,000	7000	5800
T_C	Max Stall Torque	lb-in.(Nm)	12 (1.4)	24 (2.7)	34 (3.8)
T_{Pk}	Peak Torque	lb-in.(Nm)	60 (6.78)	110 (12.4)	150 (16.95)
K_T	Torque Sensitivity	lb-in./AMP(Nm/Amp)	1.69 (.19)	4.22 (.47)	5.07 (.57)
K_e	Back E.M.F.	Volts/Krpm	20	50	60
R_a	Resistance Line to Line	Ohms	1.24	2.6	2.1
L	Inductance Line to Line	Millihenry	2	5.1	4.7
J_m	Rotor Inertia	lb-in.-sec2 (Kg-m2)	0 .0008 (0.00009)	0.0015 (0.00017)	0.00196 (0.0011)
T_F	Static Friction	lb-in.(Nm)	0.10 (.011)	0.10 (.011)	.125 (.014)
F_i	Viscous Friction	lb-In/Krpm	.075	0.094	0.156
R_{th}	Thermal Resistance	Deg C/Watt	1.2	0.92	0.8
T_m	Mechanical Time Const.	Millisec.	3.2	1.98	1.41
T_e	Electrical Time Const.	Millisec.	1.5	2.0	3.6
W_T	Motor Weight	lbs(Kg)	6 (2.71)	8 (3.62)	9.5 (4.30)

TORQUE PERFORMANCE CURVES



NOTE: Continuous torque specifications obtained with motor mounted to an 8.5"x12"x 0.50" steel plate at 25°C ambient. Typical values are within ±10% of rating.

Relationship Between K_e & K_T

Cleveland Motion Controls uses the following important motor performance parameters for the 3 phase square wave and 3 phase sine wave brushless motors in order to properly account for the British Imperial unit system currently used in the US.

$$K_e = \text{Line-to-line volts-peak} / \text{Krpm}^*$$

$$K_T = \text{Pound-inches (lb-in)} / \text{peak phase amps}$$

K_e is related to K_T as follows:

$$K_T = K_e / 11.834 \text{ for 3 phase square wave current driven amplifiers}$$

$$K_T = K_e / 13.662 \text{ for 3 phase sinusoidal wave current driven amplifiers}$$

$$*\text{Krpm} = 1000 \text{ rpm}$$

$$\text{For "RMS" values, divide peak values by } \sqrt{2}$$

STANDARD SPEED/TORQUE CURVE DATA FOR SIZING A SERVO MOTOR

N_m = Maximum speed, continuous operation

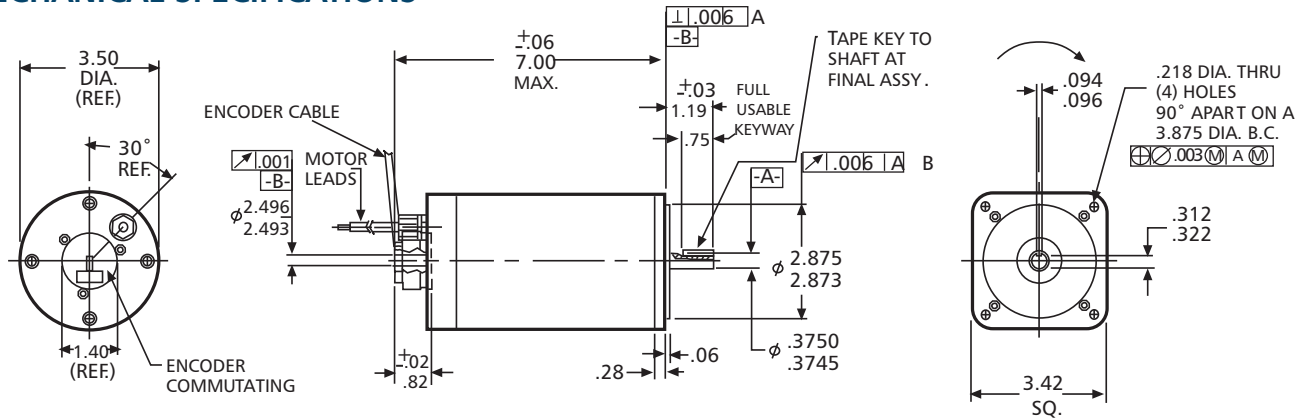
T_{cs} = Continuous stall torque

All specifications subject to change without notice.



BRUSHLESS SERVO MOTORS BNR 3300 SERIES

MECHANICAL SPECIFICATIONS



DIMENSION CHART

PART NUMBER	AG	A	AK	BB	U		AH		XD	S	R
STD (inch)					STD	NEMA 34	STD	NEMA 34			
BNR3312	4.15	3.42	2.875	.06	.500	.375	1.00	1.19	.62	.125	.420/.413
BNR3324	5.15	3.42	2.875	.06	.500	.375	1.00	1.19	.62	.125	.420/.413
BNR3334	6.15	3.42	2.875	.06	.500	.375	1.00	1.19	.62	.125	.420/.413

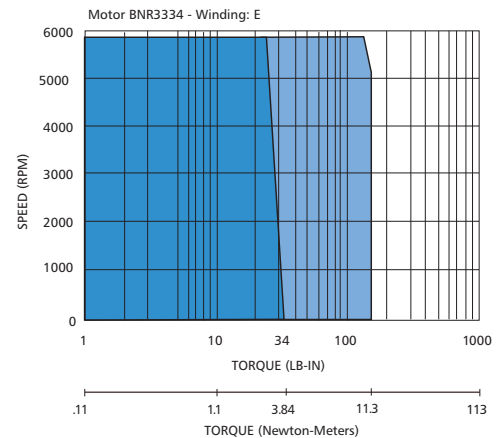
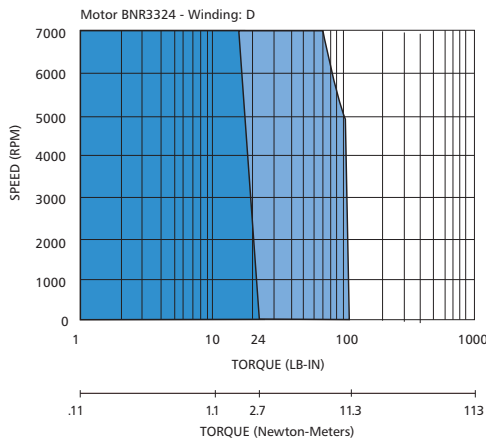
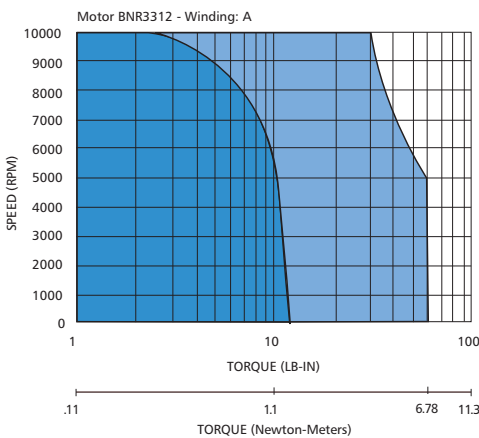
All dimensions meet NEMA 34 specifications except where indicated as standard.

Metric IEC 72 (mm)

BNR3312	105.4	86.9	60j6	2.5		15j6		30	23	5.0	12
BNR3324	130.8	86.9	60j6	2.5		15j6		30	23	5.0	12
BNR3334	156.2	86.9	60j6	2.5		15j6		30	23	5.0	12

NOTE: Dimension "AG" includes commutation feedback device and modular encoder shown on ordering information under commutation. For internal brake add 2.0" to dimension "AG"

TORQUE PERFORMANCE CURVES



TORQUE SPEED CURVES OF OTHER WINDINGS AVAILABLE, CONSULT FACTORY.



BRUSHLESS SERVO MOTORS BNR 3300 SERIES

TERMINATION CHART	
MOTOR/CABLE CODE	
Function	Wire Color
Motor M1	White
Motor M2	Black
Motor M3	Red
HALL CONNECTIONS	
+5-24V	Red
Common	Black
H1	Yellow
H2	Orange
H3	Green

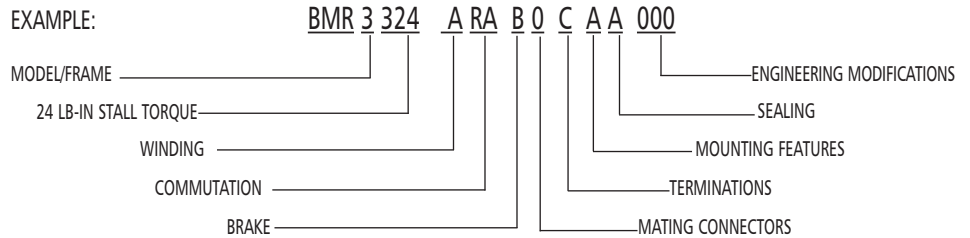
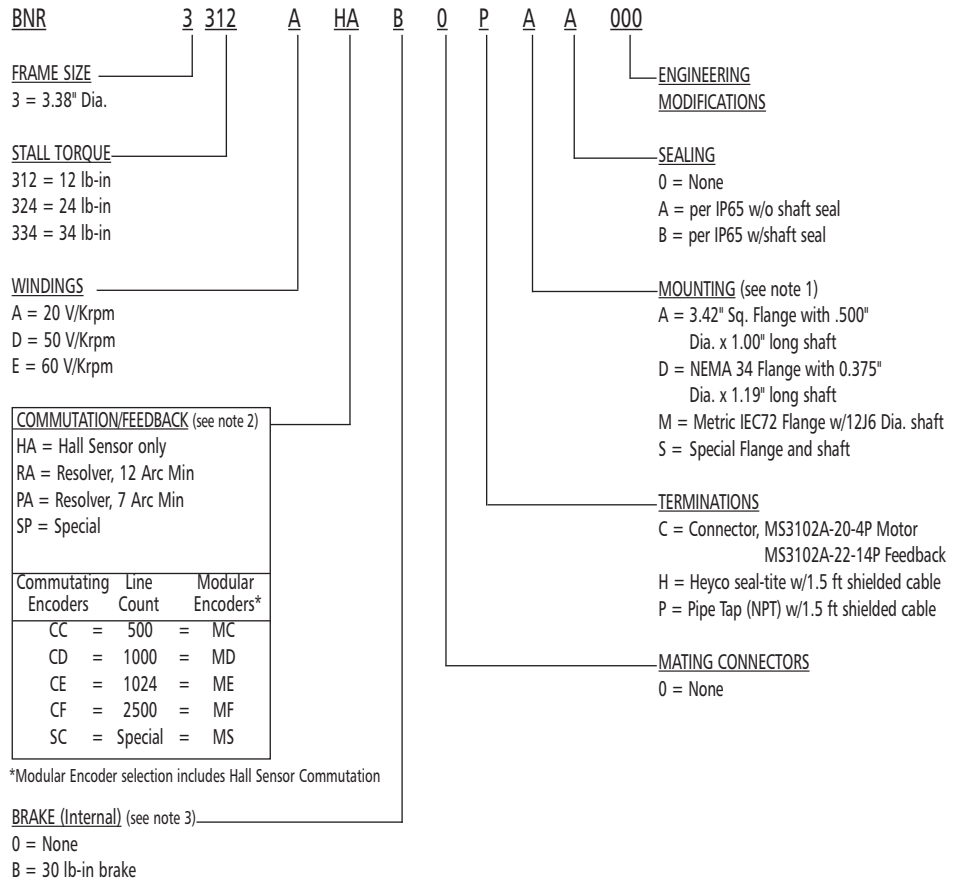
Note: Separate drain wires for motor power and halls

ENCODER WIRING CONNECTION CODE	
Function	Wire Color
Encoder Output A	Green
Encoder Output \bar{A}	Brown
Encoder Output B	Orange
Encoder Output \bar{B}	Yellow
Encoder Output M	White
Encoder Output \bar{M}	Blue
Encoder +5 VDC	Red
Encoder Common	Black
Case Ground	Drain

Note 1. Hall Sensor Specifications
Voltage = 5V to 24V
Current = 10 ma typical, 25 ma max.
Output = Open collector

Note 2. Com. Encoder
Current = 250 ma

BNR ORDERING INFORMATION – (For Standard Options)



Notes:

- Standard BMR3300 motor mounting flanges use NEMA 34 standards but have oversized shaft diameters to carry the rated torque load. Standard NEMA shaft diameters are typically undersized for most servo ratings and are not recommended. Consult CMC regarding acceptable load limits before ordering or applying this option.
- Standard encoders are dual channel line driver output with a marker pulse and complementary outputs.
- Brakes are for holding static loads and not designed to stop moving loads. Standard coils are 24 volts DC.

Customize The BNR 3300 To Your Exact Requirements

To satisfy various applications with cost-effective solutions, BNR 3300 Series motors are readily available with a wide range of standard capabilities. Final designs are often the result of cooperative efforts between the customer's engineering department and CMC. For assistance, call your local CMC distributor or CMC direct. We look forward to meeting your custom requirements.

Cleveland Motion Controls, Inc.
7550 Hub Parkway * Cleveland, OH 44125
Tel: 216.524.8800 or 800.321.8072
Fax: 216.642.2199
cmcsales@itt.com
www.cmcccontrols.com