

MDM-S (Stainless Steel) 5000 Available Motor Windings



Winding Designators: **Back EMF Constant** (Vpeak/Krpm)

X0 = 7.5 P0 = 15 B0 = 30
 T0 = 10 A0 = 20 C0 = 40
 U0 = 12.5 R0 = 25 D0 = 50

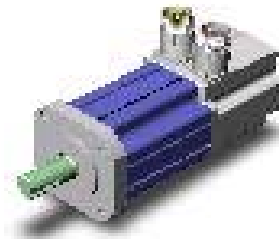
CONSULT FACTORY FOR MATCHING WINDING OPTIONS

MOTOR FRAME S0601 with a Sinusoidal Drive

28 vac Input Voltage 40 vdc Bus				56 vac Input Voltage 80 vdc Bus				115 vac Input Voltage 160 vdc Bus				230 vac Input Voltage 325 vdc Bus			
Rated Torque				Rated Torque				Rated Torque				Rated Torque			
Winding	lb-in	Nm	rpm	Winding	lb-in	Nm	rpm	Winding	lb-in	Nm	rpm	Winding	lb-in	Nm	rpm
X0	2	0.2	4626	U0	2.1	0.2	5926	R0	2.1	0.2	5923	D0	2.0	0.2	4843
T0	2.6	0.3	3152	P0	2	0.2	4627	B0	2	0.2	4627				
U0	2.8	0.5	2267	A0	2.6	0.3	3154	C0	2.6	0.3	3150				
P0	2.9	0.3	1663	R0	2.8	0.3	2267	D0	2.8	0.3	2267				
				B0	2.9	0.3	1663								

MOTOR FRAME S0602 with a Sinusoidal Drive

28 vac Input Voltage 40 vdc Bus				56 vac Input Voltage 80 vdc Bus				115 vac Input Voltage 160 vdc Bus				230 vac Input Voltage 325 vdc Bus			
Rated Torque				Rated Torque				Rated Torque				Rated Torque			
Winding	lb-in	Nm	rpm	Winding	lb-in	Nm	rpm	Winding	lb-in	Nm	rpm	Winding	lb-in	Nm	rpm
X0	3.5	0.4	2844	U0	3.6	0.4	4856	R0	3.6	0.4	6068	D0	3.5	0.4	4948
T0	4.5	0.5	3414	P0	3.5	0.4	4847	B0	3.5	0.4	4847				
U0	4.9	0.5	2558	A0	4.5	0.5	3414	C0	4.5	0.5	3414				
P0	4.9	0.6	1980	R0	4.8	0.5	2553	D0	4.8	0.5	2553				
A0	5.3	0.6	1307	B0	4.9	0.6	1980								
				C0	5.3	0.6	1307								



MDM-S (Stainless Steel) 5000 Available Motor Windings



Winding Designators: **Back EMF Constant** (Vpeak/Krpm)

X0 = 7.5 P0 = 15 B0 = 30 E0 = 60
 T0 = 10 A0 = 20 C0 = 40 F0 = 70
 U0 = 12.5 R0 = 25 D0 = 50 G0 = 80

CONSULT FACTORY FOR MATCHING WINDING OPTIONS

MOTOR FRAME S0603 with a Sinusoidal Drive

28 vac Input Voltage 40 vdc Bus				56 vac Input Voltage 80 vdc Bus				115 vac Input Voltage 160 vdc Bus				230 vac Input Voltage 325 vdc Bus			
Rated Torque				Rated Torque				Rated Torque				Rated Torque			
Winding	lb-in	Nm	rpm	Winding	lb-in	Nm	rpm	Winding	lb-in	Nm	rpm	Winding	lb-in	Nm	rpm
X0	4.9	0.6	5037	P0	4.9	0.6	5037	B0	4.9	0.6	4030	E0	4.9	0.6	5135
T0	5.5	0.6	3577	A0	5.5	0.6	3578	C0	5.2	0.6	3554	F0	4.5	0.5	4255
U0	6.2	0.7	2723	R0	6.2	0.7	2724	D0	5.8	0.7	2695				
P0	6.4	0.7	2147	B0	6.4	0.7	2149								
A0	7.0	0.8	1466	C0	6.6	0.7	1434								



MOTOR FRAME S0604 with a Sinusoidal Drive

28 vac Input Voltage 40 vdc Bus				56 vac Input Voltage 80 vdc Bus				115 vac Input Voltage 160 vdc Bus				230 vac Input Voltage 325 vdc Bus			
Rated Torque				Rated Torque				Rated Torque				Rated Torque			
Winding	lb-in	Nm	rpm	Winding	lb-in	Nm	rpm	Winding	lb-in	Nm	rpm	Winding	lb-in	Nm	rpm
X0	5.4	0.6	4106	P0	5.4	0.6	5133	B0	5.4	0.6	5134	E0	6.0	0.7	5231
T0	6.0	0.7	3634	A0	6.0	0.7	3634	C0	6.0	0.7	3633	F0	5.7	0.6	4345
U0	7.0	0.8	2771	R0	7.0	0.8	2772	D0	7.0	0.8	2772	G0	5.7	0.6	3686
P0	7.6	0.9	2212	B0	7.6	0.9	2212	E0	7.6	0.9	2210				
A0	8.0	0.9	1507	C0	8.0	0.9	1506	F0	7.9	0.9	1810				
								G0	7.7	0.9	1487				

MDM-S (Stainless Steel) 5000 Available Motor Windings



Winding Designators: **Back EMF Constant** (Vpeak/Krpm)

X0 = 7.5	P0 = 15	B0 = 30	E0 = 60	H0 = 90	L0 = 140
T0 = 10	A0 = 20	C0 = 40	F0 = 70	J0 = 100	M0 = 160
U0 = 12.5	R0 = 25	D0 = 50	G0 = 80	K0 = 120	

CONSULT FACTORY FOR MATCHING WINDING OPTIONS

MOTOR FRAME S0851 with a Sinusoidal Drive

28 vac Input Voltage 40 vdc Bus				56 vac Input Voltage 80 vdc Bus				115 vac Input Voltage 160 vdc Bus				230 vac Input Voltage 325 vdc Bus			
Rated Torque				Rated Torque				Rated Torque				Rated Torque			
Winding	lb-in	Nm	rpm	Winding	lb-in	Nm	rpm	Winding	lb-in	Nm	rpm	Winding	lb-in	Nm	rpm
X0	9.0	1.0	5193	P0	8.9	1.0	5192	B0	8.9	1.0	5192	E0	8.7	1.0	4226
T0	9.8	1.1	3787	A0	9.8	1.1	3787	C0	9.8	1.1	3786	F0	9.1	1.0	4455
U0	11.6	1.3	2968	R0	11.6	1.3	2969	D0	11.6	1.3	2969	G0	9.5	1.1	3848
P0	11.6	1.3	2406	B0	11.6	1.3	2407	E0	11.5	1.3	2405	J0	10.1	1.1	2990
A0	12.5	1.4	1730	C0	12.4	1.4	1729	F0	11.8	1.3	2013	K0	11.4	1.3	2448
R0	13.3	1.5	1333	D0	13.3	1.5	1334	G0	12.2	1.4	1724	L0	11.6	1.3	2046
												M0	12.1	14.0	1754

400 vac Input Voltage 560 vdc Bus				460 vac Input Voltage 640 vdc Bus			
Rated Torque				Rated Torque			
Winding	lb-in	Nm	rpm	Winding	lb-in	Nm	rpm
J0	7.9	0.9	5475	K0	8.9	1.0	5191
K0	9.1	1.0	4033	L0	8.3	0.9	4376
L0	9.4	1.1	3778	M0	9.5	1.1	3780
M0	10.4	1.2	3262				



MOTOR FRAME S0852 with a Sinusoidal Drive

28 vac Input Voltage 40 vdc Bus				56 vac Input Voltage 80 vdc Bus				115 vac Input Voltage 160 vdc Bus				230 vac Input Voltage 325 vdc Bus			
Rated Torque				Rated Torque				Rated Torque				Rated Torque			
Winding	lb-in	Nm	rpm	Winding	lb-in	Nm	rpm	Winding	lb-in	Nm	rpm	Winding	lb-in	Nm	rpm
T0	15.1	1.7	3855	P0	15	1.7	5263	B0	15.1	1.7	5263	E0	14.9	1.7	5356
U0	16.8	1.9	3019	A0	15.1	1.7	3855	C0	15.1	1.7	3855	F0	13.1	1.5	4517
P0	18.4	2.1	2474	R0	17.8	2.0	3029	D0	17.8	2.0	3029	G0	14.7	1.7	3919
A0	20.6	2.3	1802	B0	18.4	2.1	2474	E0	18.4	2.1	2474	H0	16.1	1.8	3448
R0	21.2	2.4	1395	C0	20.6	2.3	1802	F0	18.5	2.1	2078	J0	17.0	1.9	3074
				D0	21.2	2.4	1335	G0	20.4	2.3	1800	K0	18.2	2.1	2516
								H0	20.4	2.3	1571	L0	18.4	2.1	2113
								J0	20.4	2.3	1387	M0	19.8	2.2	1826

400 vac Input Voltage 560 vdc Bus				460 vac Input Voltage 640 vdc Bus			
Rated Torque				Rated Torque			
Winding	lb-in	Nm	rpm	Winding	lb-in	Nm	rpm
J0	14.3	1.6	5570	K0	15.0	1.7	5263
K0	13.5	1.5	4546	L0	13.4	1.5	4441
L0	13.9	1.6	3842	M0	14.6	1.6	3849
M0	16.3	1.8	3332				

MDM-S (Stainless Steel) 5000 Available Motor Windings



Winding Designators: **Back EMF Constant** (Vpeak/Krpm)

A0 = 20	C0 = 40	F0 = 70	J0 = 100	L0 = 140
R0 = 25	D0 = 50	G0 = 80	K0 = 120	M0 = 160
B0 = 30	E0 = 60	H0 = 90		

CONSULT FACTORY FOR MATCHING WINDING OPTIONS

MOTOR FRAME S0853 with a Sinusoidal Drive

28 vac Input Voltage 40 vdc Bus				56 vac Input Voltage 80 vdc Bus				115 vac Input Voltage 160 vdc Bus				230 vac Input Voltage 325 vdc Bus			
Rated Torque				Rated Torque				Rated Torque				Rated Torque			
Winding	lb-in	Nm	rpm	Winding	lb-in	Nm	rpm	Winding	lb-in	Nm	rpm	Winding	lb-in	Nm	rpm
A0	27.3	3.1	1822	A0	19.1	2.2	3876	B0	19.7	2.2	5301	E0	19.6	2.2	5407
R0	28.3	3.2	1415	R0	23.0	2.6	3043	C0	18.7	2.1	3874	F0	19.8	2.2	4547
B0	28.6	3.2	1142	B0	24.9	2.8	2500	D0	22.9	2.6	3048	G0	20.3	2.3	3939
				C0	26.8	3.0	1819	E0	25.2	2.9	2503	H0	20.7	2.3	3470
				D0	28.1	3.2	1413	F0	25.7	2.9	2108	J0	22.8	2.6	3100
				E0	29.0	3.3	1145	G0	26.8	3.0	1818	K0	25.0	2.8	2545
								H0	27.2	3.1	1591	L0	25.6	2.9	2145
								J0	28.3	3.2	1415	M0	26.7	3.0	1850
								K0	28.9	3.3	1144				

400 vac Input Voltage 560 vdc Bus				460 vac Input Voltage 640 vdc Bus			
Rated Torque				Rated Torque			
Winding	lb-in	Nm	rpm	Winding	lb-in	Nm	rpm
K0	20.2	2.3	4575	K0	19.9	2.3	5302
L0	18.5	2.1	3873	L0	20.1	2.3	4471
M0	21.3	2.4	3356	M0	18.2	2.1	3874



MOTOR FRAME S0854 with a Sinusoidal Drive

28 vac Input Voltage 40 vdc Bus				56 vac Input Voltage 80 vdc Bus				115 vac Input Voltage 160 vdc Bus				230 vac Input Voltage 325 vdc Bus			
Rated Torque				Rated Torque				Rated Torque				Rated Torque			
Winding	lb-in	Nm	rpm	Winding	lb-in	Nm	rpm	Winding	lb-in	Nm	rpm	Winding	lb-in	Nm	rpm
A0	35.5	4.0	1829	A0	26.4	2.8	3881	B0	24.5	2.8	5304	F0	25.1	2.8	4549
R0	34.8	3.9	1412	R0	28.3	3.2	3047	C0	23.9	2.7	3878	G0	26.8	3.0	3946
B0	35.7	4.0	1142	B0	31	3.5	2501	D0	28.5	3.2	3049	H0	26	2.9	3472
				C0	34.4	3.9	1824	E0	30.8	3.5	2500	J0	29.7	3.4	3107
				D0	35.1	4.0	1414	F0	32.7	3.7	2112	K0	30.8	3.5	2544
				E0	35.5	4.0	1141	G0	35.2	4.0	1828	L0	30.9	3.5	2140
								H0	34.4	3.9	1594	M0	35.1	4.0	1860
								J0	36.8	4.2	1422				
								K0	35.7	4.0	1142				

400 vac Input Voltage 560 vdc Bus				460 vac Input Voltage 640 vdc Bus			
Rated Torque				Rated Torque			
Winding	lb-in	Nm	rpm	Winding	lb-in	Nm	rpm
K0	24.8	2.8	4574	K0	24.5	2.8	5304
L0	22.3	2.5	3869	L0	24.2	2.7	4463
M0	27.9	3.2	3364	M0	24.4	2.8	3881

MDM-S (Stainless Steel) 5000 Available Motor Windings



Winding Designators: **Back EMF Constant** (Vpeak/Krpm)

C0 = 40	F0 = 70	J0 = 100	L0 = 140
D0 = 50	G0 = 80	S0 = 110	M0 = 160
E0 = 60	H0 = 90	K0 = 120	

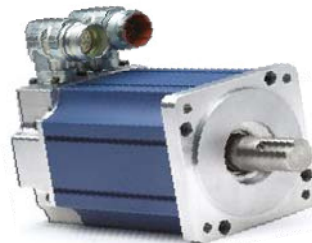
CONSULT FACTORY FOR MATCHING WINDING OPTIONS

MOTOR FRAME S1103 with a Sinusoidal Drive

115 vac Input Voltage 160 vdc Bus				230 vac Input Voltage 325 vdc Bus				400 vac Input Voltage 560 vdc Bus				460 vac Input Voltage 640 vdc Bus			
Rated Torque				Rated Torque				Rated Torque				Rated Torque			
Winding	lb-in	Nm	rpm	Winding	lb-in	Nm	rpm	Winding	lb-in	Nm	rpm	Winding	lb-in	Nm	rpm
C0	49.1	5.5	3919	F0	46.4	5.2	4630	L0	47.3	5.3	3916	L0	46.6	5.3	4541
D0	49.3	5.6	3084	G0	47.4	5.4	3984	M0	49.3	5.6	3394	M0	48.2	5.4	3918
E0	54.6	6.2	2531	H0	47.9	5.4	3510								
F0	58.9	6.7	2143	J0	47.4	5.4	3132								
G0	61.5	6.9	1852	K0	54.2	6.1	2574								
H0	63.2	7.1	1626	L0	57.7	6.5	2177								
J0	63.2	7.1	1443	M0	61.3	6.9	1884								
K0	64.8	7.3	1173												

MOTOR FRAME S1104 with a Sinusoidal Drive

115 vac Input Voltage 160 vdc Bus				230 vac Input Voltage 325 vdc Bus				400 vac Input Voltage 560 vdc Bus				460 vac Input Voltage 640 vdc Bus			
Rated Torque				Rated Torque				Rated Torque				Rated Torque			
Winding	lb-in	Nm	rpm	Winding	lb-in	Nm	rpm	Winding	lb-in	Nm	rpm	Winding	lb-in	Nm	rpm
C0	63.4	7.2	3951	G0	61.2	6.9	4020	L0	65.1	7.4	3852	M0	61.9	7.0	3950
D0	62.5	7.1	3102	H0	63.1	7.1	3534	M0	55.7	6.3	3414				
E0	67.4	7.6	2551	J0	62.5	7.1	3155								
F0	72.5	8.2	2158	K0	68.1	7.7	2586								
G0	75.2	8.5	1864	L0	74.4	8.4	2199								
H0	80.3	9.1	1642	M0	74.6	8.4	1896								
J0	81.6	9.2	1461												
K0	85.3	9.6	1192												



MDM-S (Stainless Steel) 5000 Available Motor Windings



Winding Designators: **Back EMF Constant** (Vpeak/Krpm)

E0 = 60 H0 = 90 L0 = 140 S0=200
 F0 = 70 J0 = 100 M0 = 160
 G0 = 80 K0 = 120 V0= 180

CONSULT FACTORY FOR MATCHING WINDING OPTIONS

MOTOR FRAME S1402 with a Sinusoidal Drive															
115 vac Input Voltage 160 vdc Bus				230 vac Input Voltage 325 vdc Bus				400 vac Input Voltage 560 vdc Bus				460 vac Input Voltage 640 vdc Bus			
Rated Torque				Rated Torque				Rated Torque				Rated Torque			
Winding	lb-in	Nm	rpm	Winding	lb-in	Nm	rpm	Winding	lb-in	Nm	rpm	Winding	lb-in	Nm	rpm
E0	73.6	8.3	2544	E0	59.0	6.7	5396	K0	57.4	6.5	4590	K0	56.8	6.4	5300
F0	74.7	8.4	2153	F0	59.1	6.7	4567	L0	55.2	6.2	3902	L0	59.7	6.7	4493
G0	77.5	8.8	1866	G0	55.0	6.2	3967	M0	62.7	7.1	3390	M0	55.5	6.3	3902
H0	78.4	8.9	1640	H0	61.4	6.9	3503								
J0	78.8	8.9	1453	J0	65.4	7.4	3133								
K0	78.6	8.9	1187	K0	69.5	7.8	2579								
				L0	74.1	8.4	2183								
				M0	76.7	8.7	1896								

MOTOR FRAME S1403 with a Sinusoidal Drive															
115 vac Input Voltage 160 vdc Bus				230 vac Input Voltage 325 vdc Bus				400 vac Input Voltage 560 vdc Bus				460 vac Input Voltage 640 vdc Bus			
Rated Torque				Rated Torque				Rated Torque				Rated Torque			
Winding	lb-in	Nm	rpm	Winding	lb-in	Nm	rpm	Winding	lb-in	Nm	rpm	Winding	lb-in	Nm	rpm
F0	92.5	10.5	2195	G0	79.7	9.0	4031	L0	80.6	9.1	3964	M0	82.2	9.2	3964
G0	97.5	11.0	1905	H0	79.0	8.9	3555	M0	72.9	8.2	3440				
H0	110.6	11.4	1679	J0	78.3	8.9	3181								
J0	102.6	11.6	1499	K0	141.7	16	2564								
K0	104.0	11.7	1227												

MOTOR FRAME S1404 with a Sinusoidal Drive															
115 vac Input Voltage 160 vdc Bus				230 vac Input Voltage 325 vdc Bus				400 vac Input Voltage 560 vdc Bus				460 vac Input Voltage 640 vdc Bus			
Rated Torque				Rated Torque				Rated Torque				Rated Torque			
Winding	lb-in	Nm	rpm	Winding	lb-in	Nm	rpm	Winding	lb-in	Nm	rpm	Winding	lb-in	Nm	rpm
G0	110.7	12.5	1921	H0	93.5	10.6	3590	M0	96.3	10.9	3470	V0	95.0	10.7	3529
H0	116.0	13.1	1695	J0	91.2	10.3	3205								
J0	119.0	13.4	1514	K0	91.7	10.4	2647								
K0	129	14.6	1247	L0	101.2	11.4	2248								
L0	127	14.3	1051	M0	109.9	12.4	1953								

MOTOR FRAME S1405 with a Sinusoidal Drive															
115 vac Input Voltage 160 vdc Bus				230 vac Input Voltage 325 vdc Bus				400 vac Input Voltage 560 vdc Bus				460 vac Input Voltage 640 vdc Bus			
Rated Torque				Rated Torque				Rated Torque				Rated Torque			
Winding	lb-in	Nm	rpm	Winding	lb-in	Nm	rpm	Winding	lb-in	Nm	rpm	Winding	lb-in	Nm	rpm
J0	142	16	1525	J0	114.1	12.9	3230	V0	139.6	15.8	3085	S0	115.8	13.1	3176
K0	162	16	1250	K0	102.2	11.5	2657	S0	116.7	13.2	2755				
L0	150.7	17	1059	L0	111.6	12.6	2260								
				M0	126.0	14.2	1964								
				V0	158	17.9	1744								
				S0	141	15.9	1550								